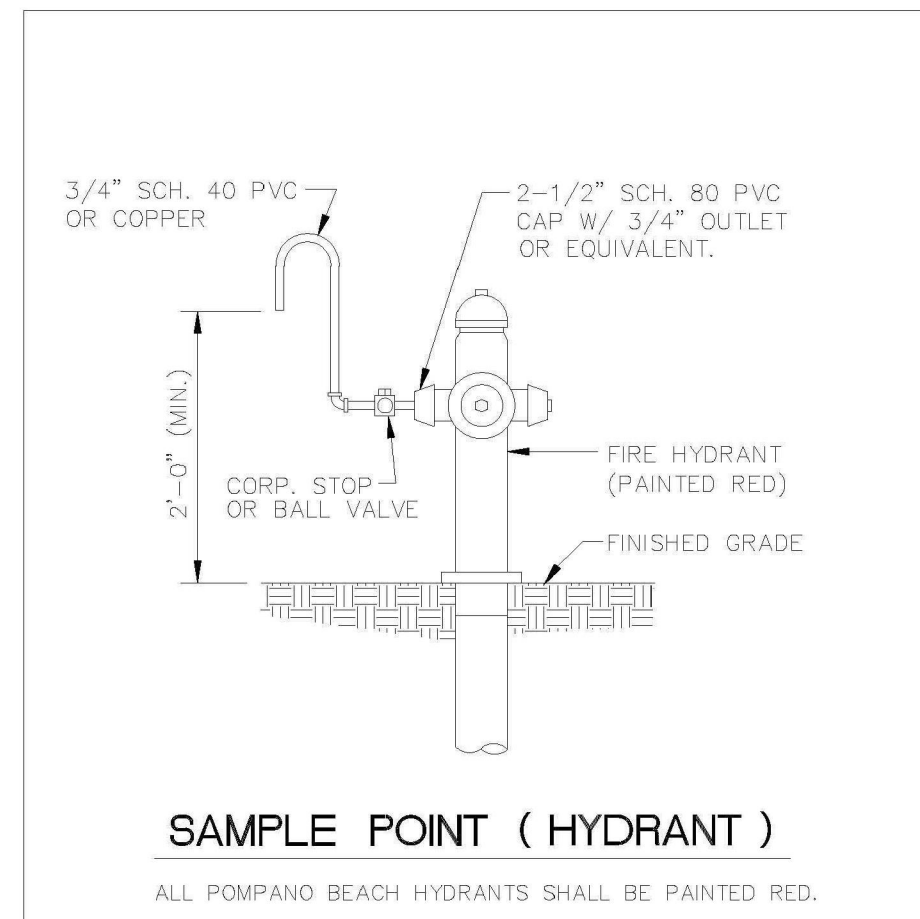
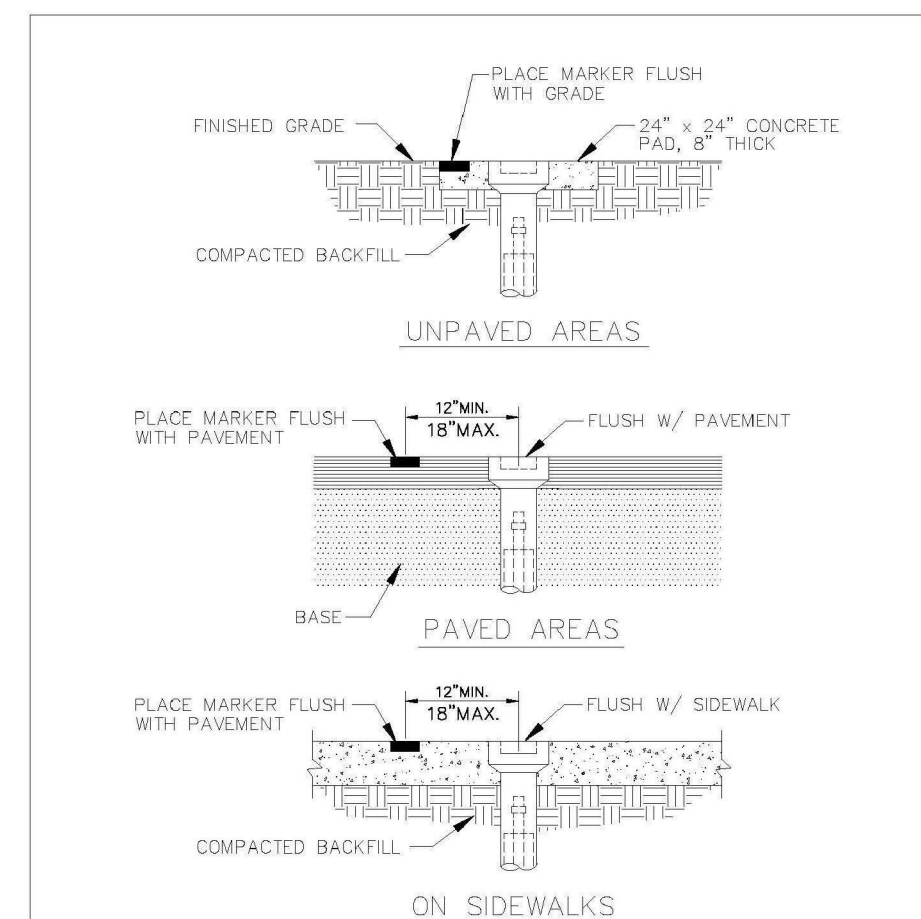


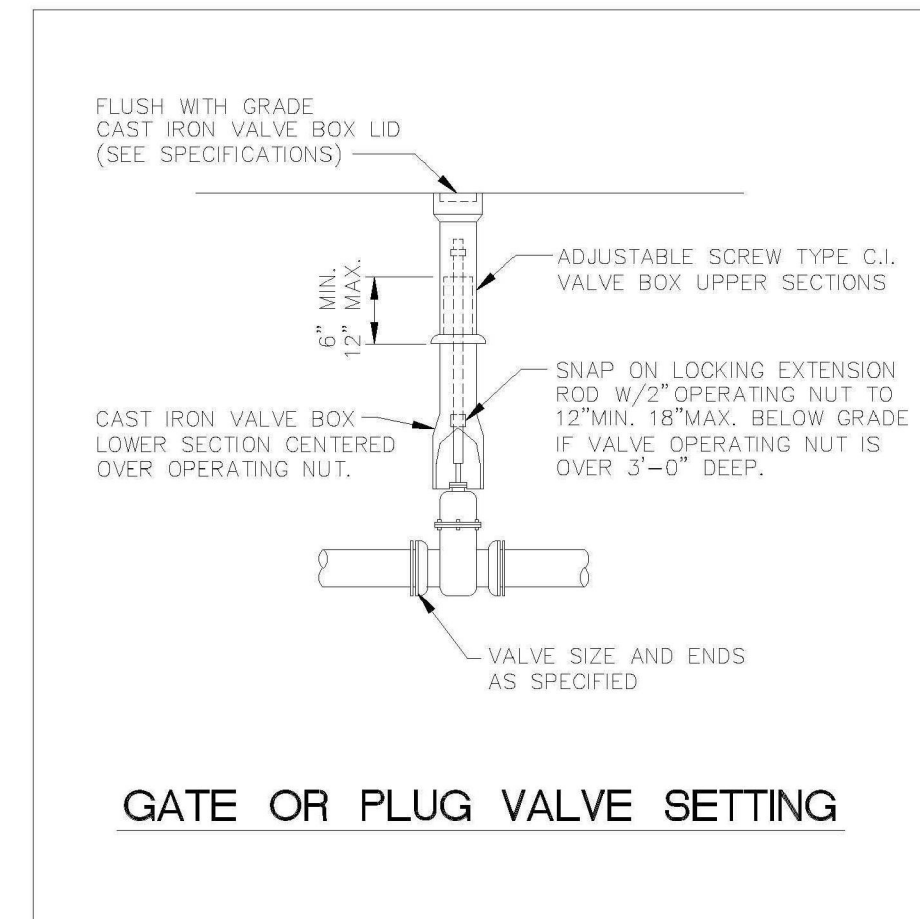
		ALL D.W.P. TO BE PAINTED BLUE ON TOP HALF OF PIPE.	
ENGINEERING STANDARDS 2022			
REVISIONS	ENGINEERING DIVISION CITY OF POMPAHO BEACH		SAMPLE POINT (MAIN)
BY DATE			
D.S. 04-2020			
SCALE: N.T.S.		DATE: MAY 2023	DWG. NO. 100-1



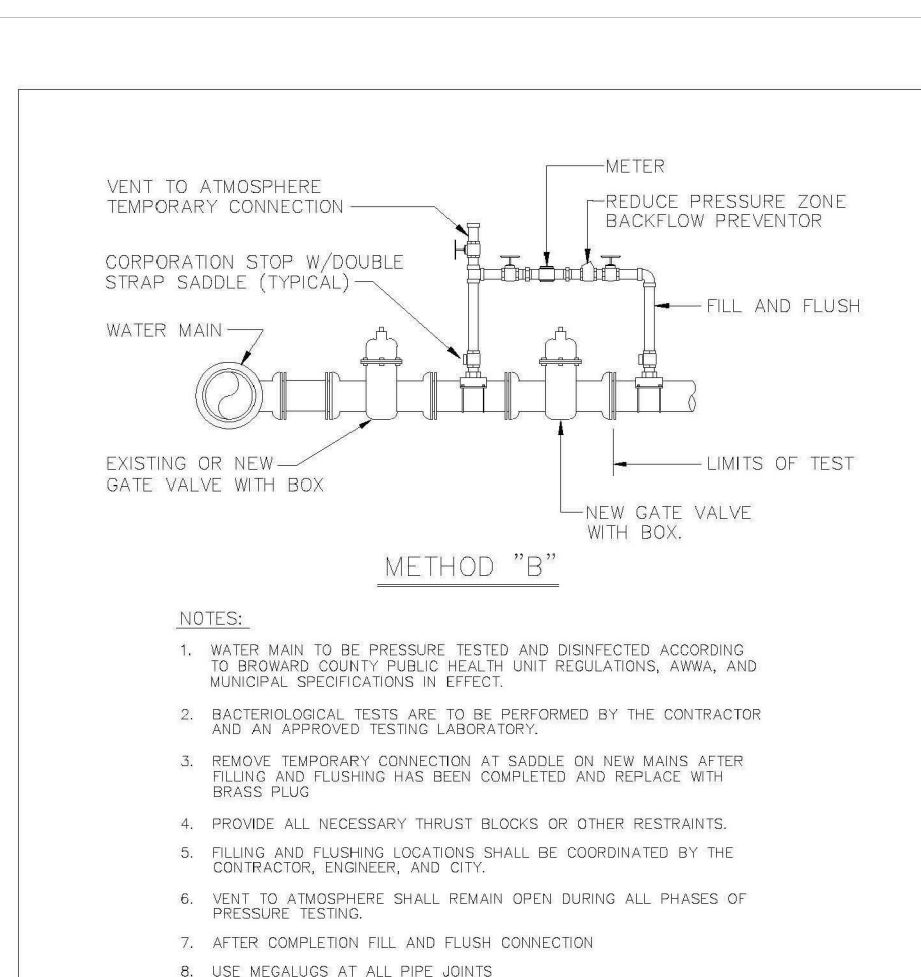
		ALL D.I.P. TO BE PAINTED BLUE ON TOP HALF OF PIPE	
ENGINEERING STANDARDS 2022			
REVISIONS		SAMPLE POINT (HYDRANT) CITY OF POMPAÑO BEACH SCALE: N.T.S.	
BY	DATE		
S.S.	04-2009		
		DATE: MAY 2022 DWG. NO. 101-1	



ENGINEERING STANDARDS 2022				
REVISIONS		ENGINEERING DIVISION CITY OF POMPAÑO BEACH	VALVE BOX SETTINGS	
BY	DATE		DATE: MAY 2022 DWG. NO. 102-1	
S.S.	04-2005			
SCALE: N.T.S.				



		ALL D.I.P. TO BE PAINTED BLUE ON TOP HALF OF PIPE	
ENGINEERING STANDARDS 2022			
REVISIONS BY DATE S.S. 04-2005 T.W. 11-2007		ENGINEERING DIVISION CITY OF POMPAHO BEACH SCALE: N.T.S.	
		GATE OR PLUG VALVE SETTINGS	DATE: MAY 2022 DWG. NO. 103-1



FILLING AND FLUSHING CONNECTION

ALL D.I.P. TO BE PAINTED
BLUE ON TOP HALF OF RIPE.

ENGINEERING STANDARDS 2022

FILLING / FLUSHING CONNECTION

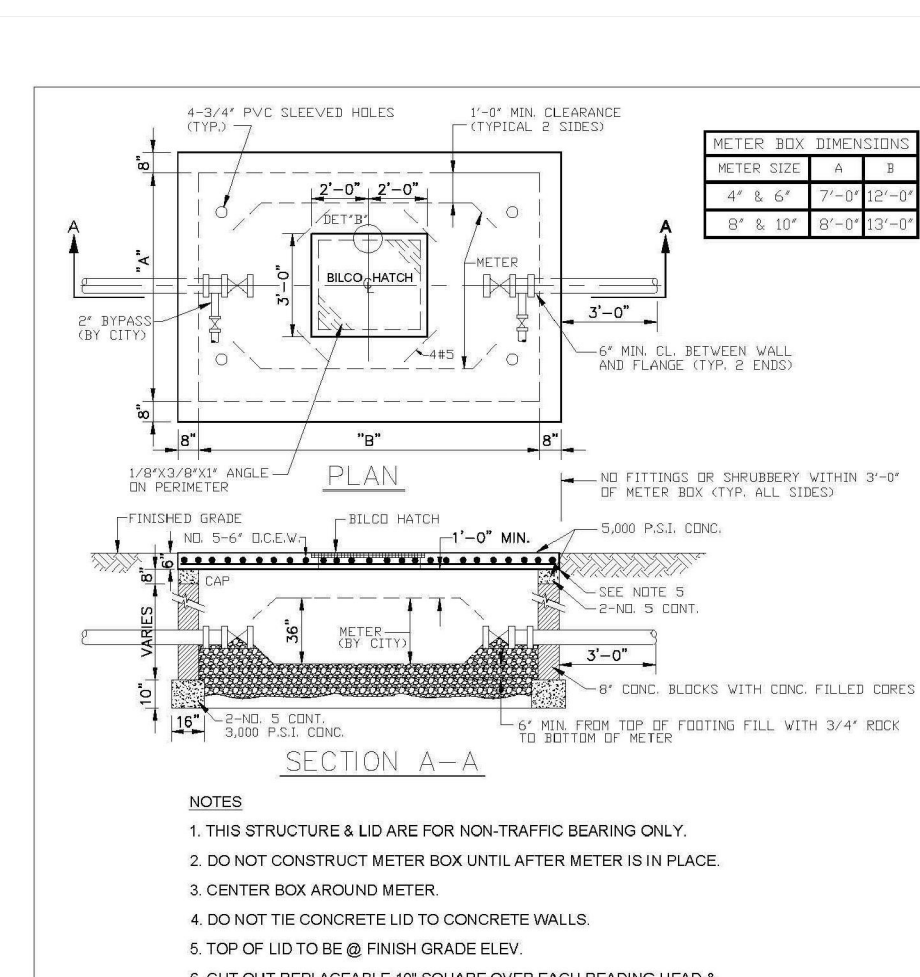
REVISIONS

BY	DATE
S.S.	04-2006
T.W.	11-2007
S.S.	01-2012

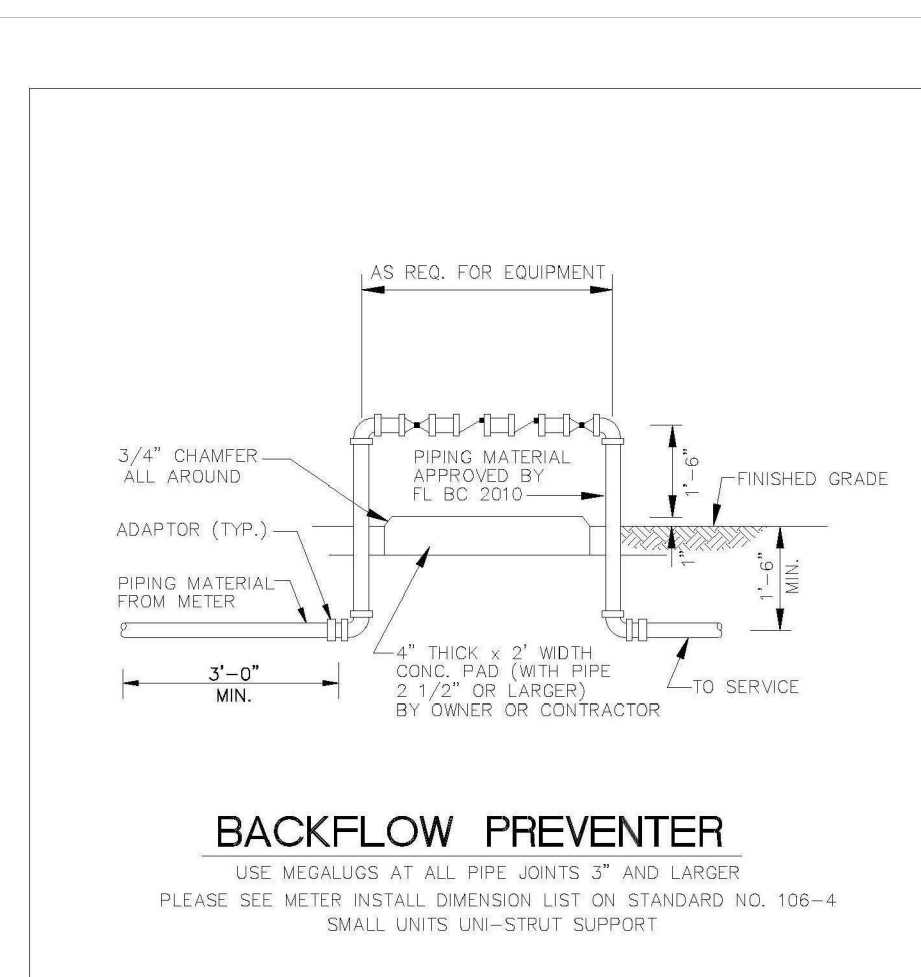
ENGINEERING DIVISION
CITY OF POMPAHO BEACH

SCALE: N.T.S.

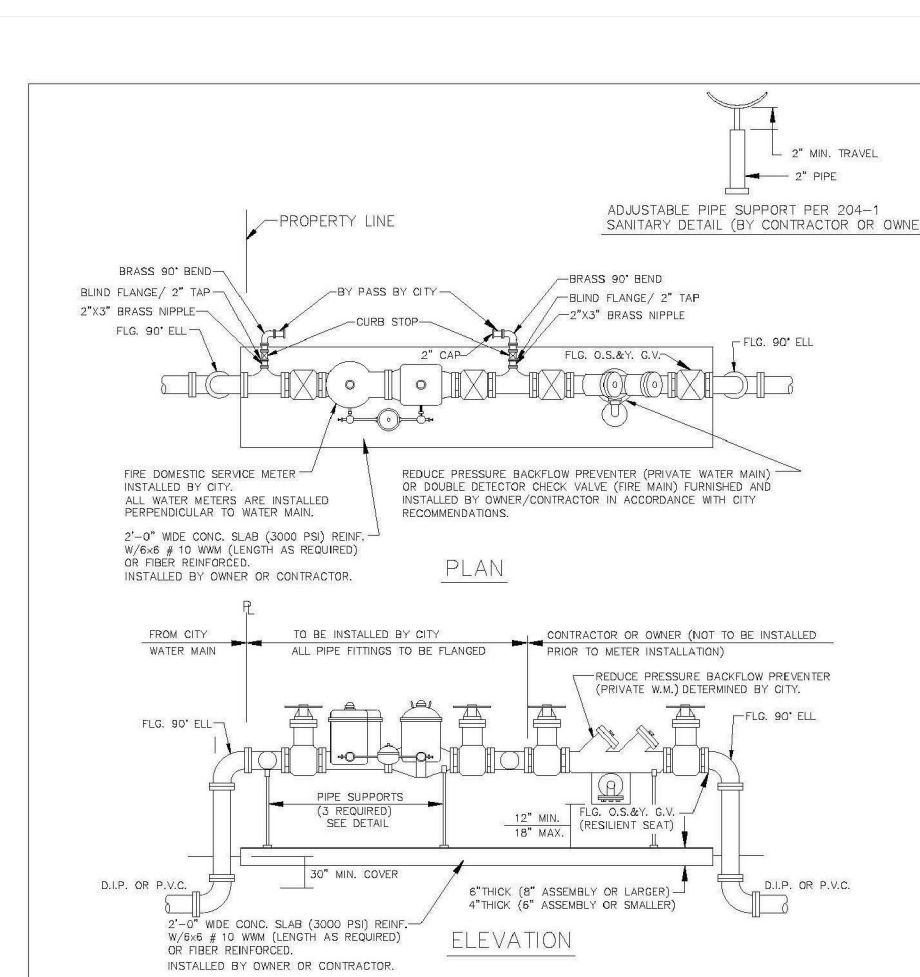
DATE: MAY 2022
DWG. NO. **104-1**



7. FITS NEPTUNE R450 ANTENNA. 8. BILD0 HATCH MODEL: JAL OR JD-AL OR EQUAL		LARGE METER BOX	
ENGINEERING STANDARDS 2022			
REVISIONS: BY DATE T.W. 03-2008 S.S. 01-2012 S.S. 11-2012		ENGINEERING DIVISION CITY OF POMPAÑO BEACH SCALE: N.T.S.	
		LARGE METER BOX DATE: MAY 2022 DWG NO. 105-1	



REVISIONS BY DATE T.W. 04-2008 S.S. 05-2009 S.S. 11-2012 S.S. 08-2013		ENGINEERING STANDARDS 2022 CITY OF POMPAÑO BEACH SCALE: N.T.S.	BACKFLOW PREVENTER DATE: MAY 2022 DRG. NO. 106-1
--	--	--	--



FIRE AND DOMESTIC COMBINED SOURCE	
NOTES	
1. THE BACKFLOW PREVENTOR FOR THE BY-PASS SHALL BE BODY OR	
2. APPROXIMATE ORDER	
LEAD TIME OF 60 TO 75 DAYS AFTER FULL PLAN/PERMIT. PLEASE CONTACT CUSTOMER SERVICE AT 800-456-4623 TO ORDER BACKFLOW PREVENTOR AND METER PREVENTION KIT.	
3. USE MEASURES AT ALL PIPE JOINTS	
4. PLEASE SEE METER PIPING CONNECTION LIST ON STANDARD WQ 106-5	
ENGINEERING STANDARDS 2022	
REVISIONS	MASTER METER AND BACKFLOW DEVICE
DATE	ENGINEERING DIVISION
S.S. 08-20-21	CITY OF POMPAÑO BEACH
S.S. 11-20-23	
S.S. 12-20-23	SCALE: N.T.S.
DATE: MAY 2022	106-2
DRAWN BY: TMM	



KEITH

**301 East Atlantic Blvd. Pompano
Beach, FL 33060
PH: (954) 788-3400**

Florida Certificate of Authorization: 7928
Licensed Business Number: 6860

[illegible]

**PRELIMINARY PLAN
NOT FOR CONSTRUCTION**
THESE PLANS ARE NOT FULLY PERMITTED
AND ARE SUBJECT TO REVISIONS MADE
DURING THE PERMITTING PROCESS.
RESPONSIBILITY FOR THE USE OF THESE
PLANS PRIOR TO OBTAINING PERMITS FROM
ALL AGENCIES HAVING JURISDICTION OVER
THE PROJECT WILL FALL SOLELY UPON THE
USER.

ISSUE DATE:	11/28/23
-------------	----------

DESIGNED BY: MA, MP

DRAWN BY: MA, MP, JP


CHECKED BY: MV, MP

BID-CONTRACT:

This item has been digitally signed and sealed by **MICHAEL PINZON** P.E. on the date adjacent to the seal.

Printed copies of this document are not considered signed and sealed and the signature must be verified on any electronic copies.

2023.11.27 11:58:07-05'00'



MICHAEL PINZON
L I C E N S E
No. 95668
STATE OF FLORIDA
PROFESSIONAL ENGINEER

MICHAEL PINZON, P.E.
FLORIDA REG. NO. 95668
(FOR THE FIRM)

CLIENT

**ATLANTIC
RESIDENTIAL**

PROJECT

Live!

**INDIGO
POMPANO BEACH
RESIDENTIAL**

SHEET TITLE

WATER AND SEWER DETAILS

SHEET **CII-501**

NUMBER	CU-501
PROJECT NUMBER	10230.19

Plotted by: mpinzon On 11/21/2023 4:15 PM

Drawing name: Q:\10230.19 - Atlantic Realty Residential - Isle Casino\Engineering\10230.19-CU-5XX.dwg

STATUS: DRC SUBMITTAL